



PRESENTS

Fabrics by
Renée Nanneman

Villageware Toile



Quilt designed by Jean Ann Wright
Quilt size: 64" x 64"

12/28/12



makower uk[®]

www.andoverfabrics.com

Villageware Toile

Fabrics by Renée Nanneman

*Fabrics shown are 25% of actual size.
All fabrics are used in featured quilt pattern.*



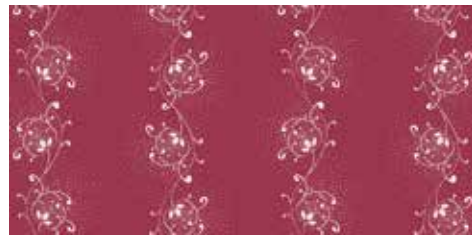
makower uk® www.andoverfabrics.com

1384 Broadway
New York, NY 10018
(800) 223-5678

| Bolts needed to cut project kits | | | | | |
|--|--------|--------|---------|---------|---------|
| Red | Brown | Black | 10 kits | 20 kits | 30 kits |
| 6096-R | 6096-N | 6096-K | 2 | 3 | 4 |
| 6097-R | 6097-N | 6097-K | 1 | 2 | 3 |
| 6098-R | 6098-N | 6098-K | 1 | 1 | 1 |
| 6099-R | 6099-N | 6099-K | 1 | 2 | 2 |
| 7000-R | 7000-N | 7000-K | 1 | 1 | 1 |
| 7001-R* | 7001-N | 7001-K | 1 | 2 | 2 |
| 7002-R | 7002-N | 7002-K | 1 | 1 | 2 |
| 7003-R | 7003-N | 7003-K | 1 | 1 | 2 |
| Backing Fabric | | | | | |
| *7001-R | 7001-N | 7001-K | 3 | 6 | 9 |
| <i>*Yardage needed for backing (4 yards per kit)</i> | | | | | |



6096-R 2 yards



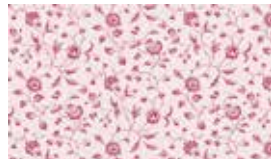
6097-R 1/4 yards (includes binding)



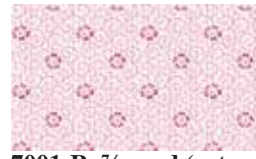
6098-R 1/2 yard



6099-R 1 yard



7000-R 1/2 yard



7001-R 7/8 yard (extra yds needed for backing)



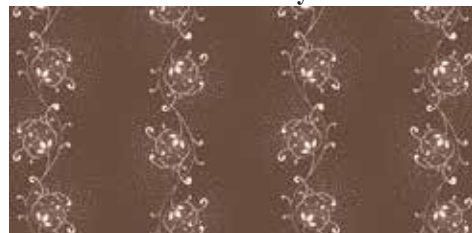
7002-R 3/4 yard



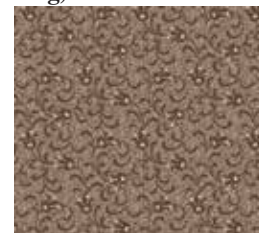
7003-R 2/3 yard



6096-N



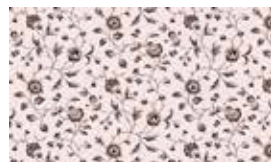
6097-N



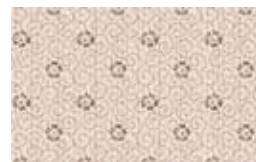
6098-N



6099-N



7000-N



7001-N



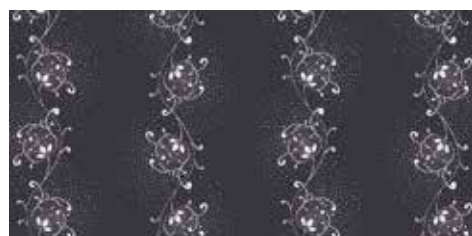
7002-N



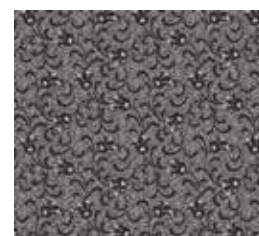
7003-N



6096-K



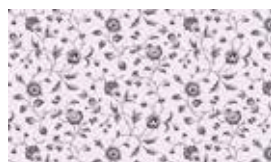
6097-K



6098-K



6099-K



7000-K



7001-K



7002-K



7003-K